

CANAL CONVERGENCE

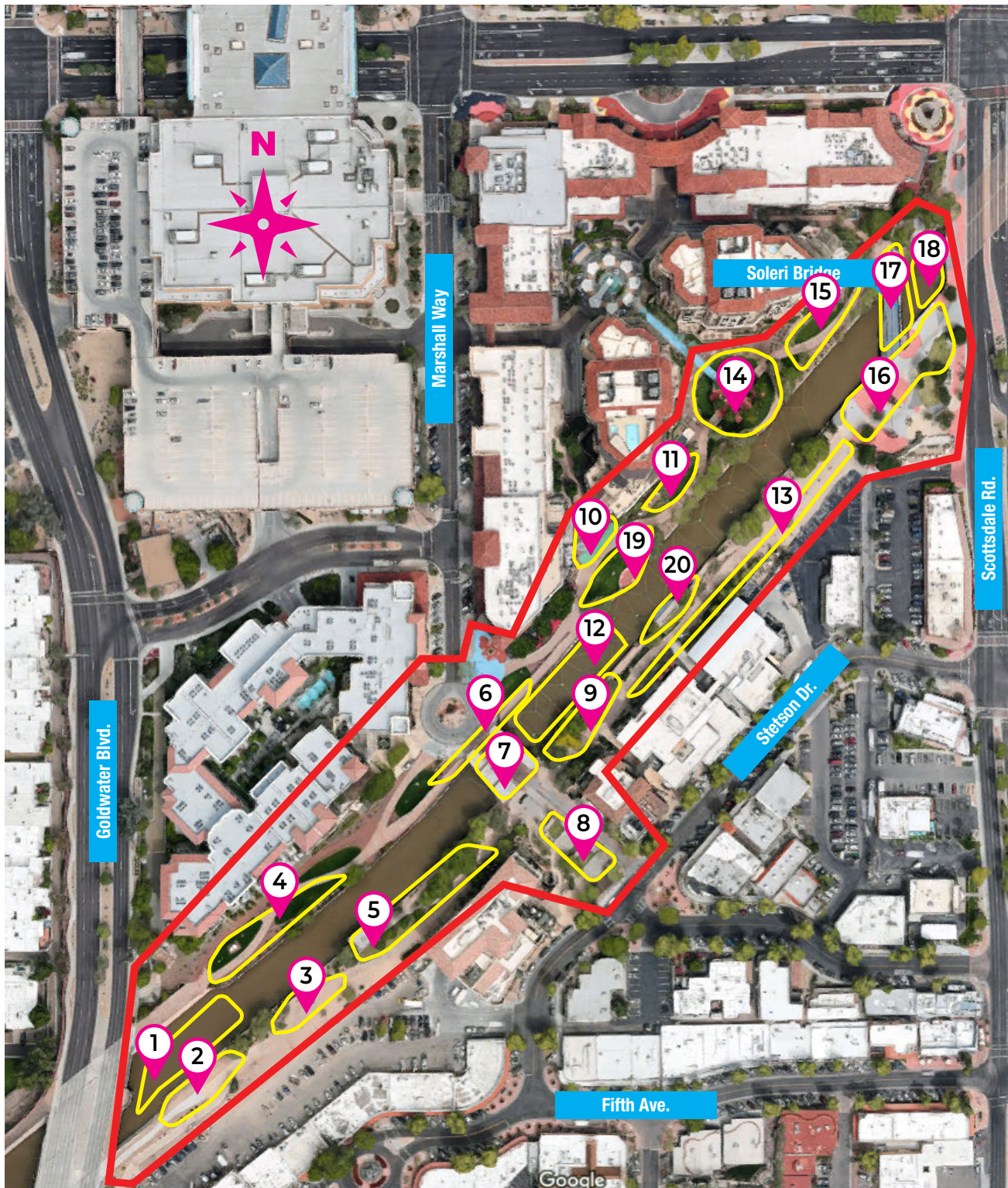
REFLECTIONS

Request for Temporary Public Art Proposals
Site Information Packet
RFP Deadline: Wednesday, April 24, 2024

arts
scottsdale
canal convergence

Canal Convergence Site Map Information

Enclosed are ground-level daytime photos of the sites we have identified as available artwork activation areas for Canal Convergence. For additional information and images, specific measurements, or questions, please contact Jennifer Gill at JenniferG@ScottsdaleArts.org.



Map data: Google

Canal Convergence Site Map: Aerial View

To view 360-degree photos of select locations on the map below, go to CanalConvergence.com/Waterfront360.

Installation Locations

1

West section of canal

Canal area beginning at Goldwater Bridge and extending northeast approximately 200 feet.



View from Goldwater Bridge, facing east.



Aerial view, facing east, showing 2016 artwork *Spiraling Droplets* by Aphidoidea.

2

Far southwest bank of canal

Between Goldwater Bridge and Marshall Way Bridge



Gravel area between pedestrian path and canal, facing west toward Goldwater Bridge.



View of *Permutate* by Nicole A Banowetz on gravel area between pedestrian path and canal, facing south from the north bank.

Installation Locations (cont.)

3

Southwest bank of canal

Between Goldwater Bridge and Marshall Way Bridge



Gravel area between pedestrian path and railing, facing east.



Gravel area between pedestrian path and railing, facing west toward Goldwater Bridge.

4

Northwest bank of canal

Between Goldwater Bridge and Marshall Way Bridge



Grass and gravel areas on either side of the pedestrian path, facing east.



Grass and gravel areas on either side of the pedestrian path, facing west.

Installation Locations (cont.)

5

Shade structure on southwest bank of canal

Steel shade structure, concrete, and grass area between Goldwater Bridge and Marshall Way Bridge. Art can be attached to the shade structure.



Grass area and shade structure, facing north.



Grass area and shade structure, facing west.

6

The underpass

A pathway runs under the north side of Marshall Way Bridge. There are landscaped insets on both sides of the underpass.



Path and underpass, facing west.



Underpass, facing east.

Installation Locations (cont.)

7

Marshall Way Bridge

Between Stetson Plaza and Marshall Way roundabout. Art may be attached to the structure above and the metal grate below.



West side of the bridge, facing northwest.



Center of the bridge, facing north.

8

Stetson Plaza

Between Stetson Drive and Marshall Way Bridge. One concrete splash pad plateau, closest to Stetson Drive, and one grass and concrete plateau, closer to Marshall Way Bridge. Note that there is a permanent, mosaic public art installation, *Pinball Wizard* by Annette Coleman, located on the concrete dividing wall between the two plateaus, and that the splash pad water is turned off November 1–March 1 every year.



Splash pad plateau, facing northwest.



Grass and concrete plateau, facing east.

Installation Locations (cont.)

9

Landscape area on southeast side of the canal

Between Marshall Way Bridge and Soleri Bridge



Gravel area and concrete pedestrian path, facing east.



Gravel area and path showing 2018 artwork *Infinity Crystal* by Klip Collective, facing east.

10

Northeast side of the canal

Between Marshall Way Bridge and Soleri Bridge



Expansion of pathway east of Marshall Way Bridge, facing north.

11

Grass area on northeast side of canal

Between Marshall Way Bridge and Soleri Bridge



Grass area between pedestrian path and residential building, facing west.

Installation Locations (cont.)

12

East section of canal near Marshall Way Bridge

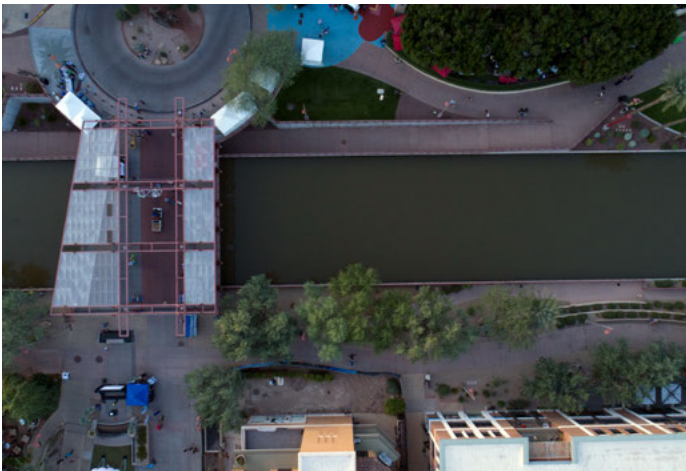
Canal area beginning on the east side of Marshall Way Bridge and extending northeast approximately 200 feet.



ARIZONA! by Choi+Shine Architects. Photo: Hannon Rigging, 2018



Reflection Rising by Patrick Shearn of Poetic Kinetics. Photo: Jennifer Gill, 2018



Installation Locations (cont.)

13

Southeast side of canal

Between Marshall Way Bridge and Soleri Bridge



Gravel and landscaped area south of pedestrian path, facing west.



Gravel and landscaped area south of pedestrian path, facing east.

14

Circular fountain area

Between Marshall Way Bridge and Soleri Bridge



Water fountain with surrounding grass and concrete areas, facing southwest.



Water fountain with surrounding grass and concrete areas, facing northeast.

Installation Locations (cont.)

15

Northeast side of canal

Near Soleri Bridge



Grass area between pedestrian path and residential building, facing east.



Grass area between pedestrian path and canal, facing east.

16

Soleri Plaza

The portion of Soleri Plaza alongside the canal is free of main stage traffic and may be used for artwork placement.



Soleri Plaza, south of Soleri Bridge, facing east.



Soleri Plaza, facing north.

Installation Locations (cont.)

Soleri Bridge and Plaza

The main stage and the food, beer, and wine garden will be on this plaza. Consider how your piece may fit within this space and in relation to these elements.



Aerial view of Soleri Bridge and Plaza, facing southeast.

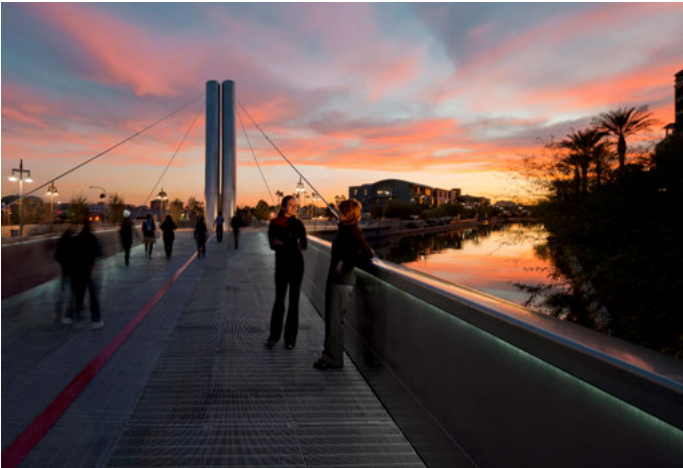


Aerial view during Canal Convergence 2019, facing northeast.

17

Soleri Bridge

West of Scottsdale Road



Soleri Bridge, facing south toward Soleri Plaza.

18

Section of canal

Between Soleri Bridge and Scottsdale Road



Small canal section east of Soleri Bridge, facing north.

Installation Locations (cont.)

19

Northeast bank of canal

Grass and colored concrete area south of the pedestrian path.



Colored concrete pad, facing south.



Grass area between pedestrian path and canal, facing east.

20

Southeast bank of canal

Grass, concrete, and gravel landscaping area with pedestrian path.



View from lower pedestrian path, facing west.



View from half-circle overhang on lower pedestrian path, facing south.